



MILAGRO

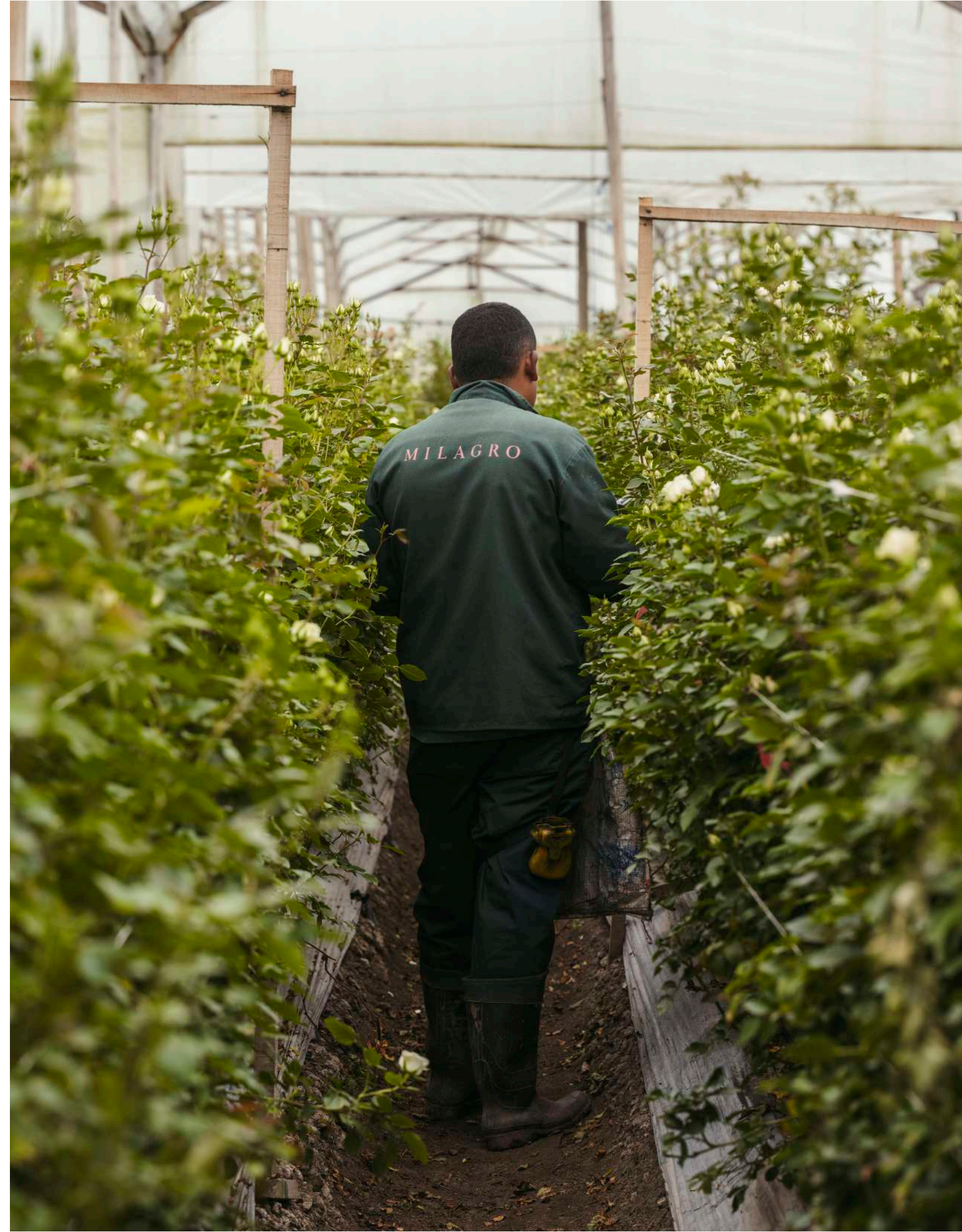
MILAGRO 2024

Milagro's portfolio is driven by trends, allowing us to meet florists' needs as they seek to express their floral style. Passionate about our craft, Milagro stands out as a farm offering a diverse range of trendy roses for the Wholesale Market.

We pride ourselves on being one of the few farms in Colombia with unique rose varieties, alongside sophisticated summer flowers in high demand for events, like ranunculus and anemones.

At Milagro, sustainability is at the heart of everything we do. We are committed to being sustainably conscious, understanding that caring for our environment begins with the soil and our people. A fertile land nurtures not only our blooms but also our business.

Join us in our journey toward a greener future as we cultivate beautiful flowers with a deep respect for nature.



# Index

## *Varieties*

pg 6.

ROSES

pg 12.

GARDEN ROSES

pg 16.

SPRAY ROSES

pg 18.

RANUNCULUS

pg 20.

ANEMONES

## *Milagro in Seasons*

pg 24.

TIMELESS NEUTRALS

pg 30.

MAGMA HUES

pg 36.

BERRIES & CREAM

pg 42.

SUNSET GLOW

pg 48.

PISTACHIO CREAM

# *Varieties*

We closely study market trends and wholesale needs to provide our partners with an insightful, exclusive, trendy, and sophisticated selection all in one portfolio. Our collection of roses, ranunculus, and anemones truly speaks for itself. Enjoy!

*Dante*



## 01. *Roses*

Experience our carefully curated collection of standard roses, featuring a diverse range of vibrant everyday colors and unique varieties to suit any occasion.



*Café del Mar*



*Red Panther* | *bicolor*



*Black Baccara*



*Explorer*



*Freedom*



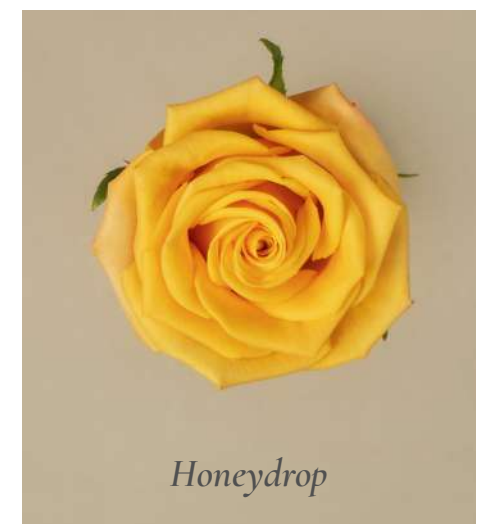
*Nina*



*Dante*



*High & Magic* | *bicolor*



*Honeydrop*



*Momentum*



*Giselle*



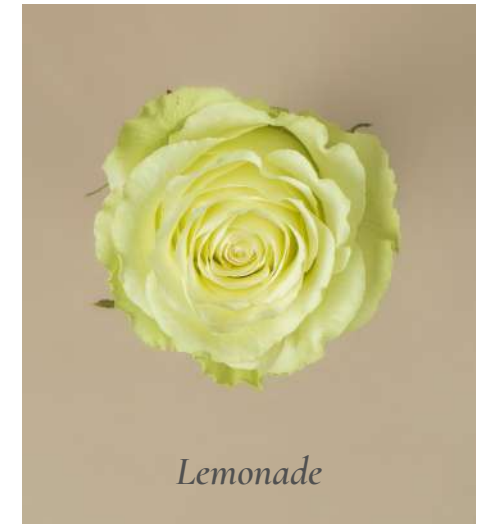
*Symbol* | *bicolor*



*Mondial*



*Alba*



*Lemonade*



*Barista*



*Quicksand*



*Silver Sand*



*Frutetto* | *bicolor*



*Salma*



*Pink Mondial* | *bicolor*



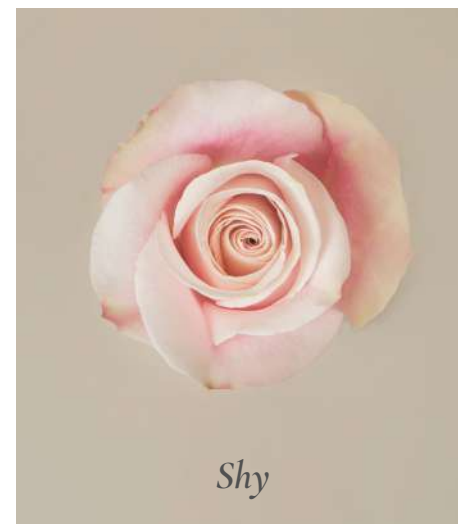
*Playa Blanca*



*Proud*



*Sparkle*



*Shy*



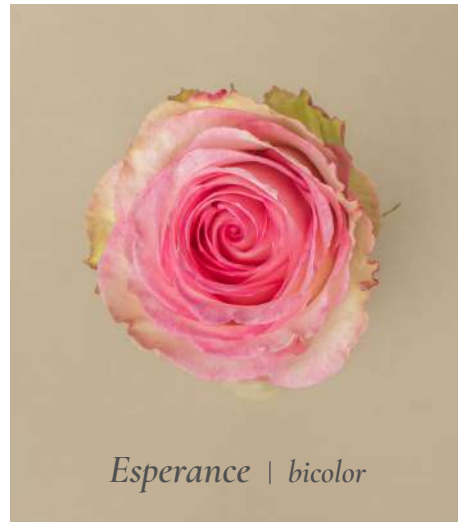
*Phoenix*



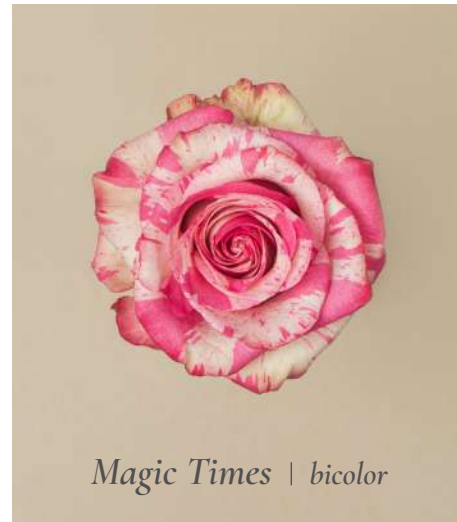
*Saga*



*Hermosa*



*Esperance* | *bicolor*



*Magic Times* | *bicolor*



*Full Monty*



*Pink Floyd*



*Lola*



*Ascot*



*Moody Blues* | *bicolor*



*Shocking blue*

*Shocking Blue*

Meet our newest variety, a very fragrant rose that captivates with its beautiful lilac-blue blooms. Perfect for making a statement and evoking deep admiration.



*Buttercup*



## 02. Garden Roses

Selected with an eye for sophisticated colors, these roses open slowly in the vase, creating a daily transformation as their petals multiply, revealing exquisite shapes and patterns. Certain varieties also offer a delightful fragrance, ranging from rich to delicate.



*Hearts*



*Dark X-expression | bicolor*



*Kahala | bicolor*



*King's Cross*



*White O'hara*



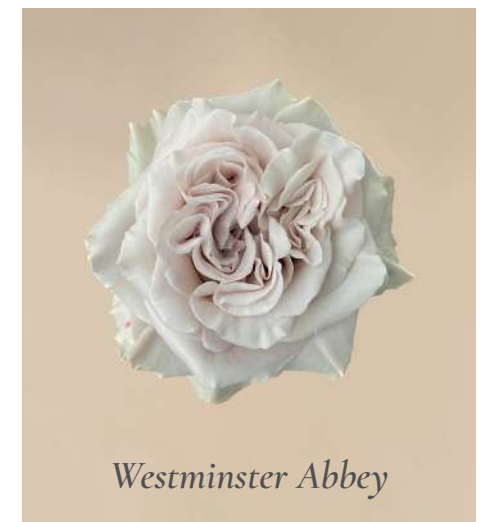
*Candlelight*



*Buttercup*



*Matcha*



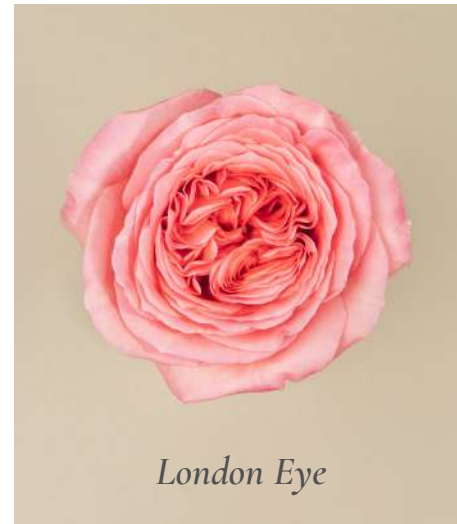
*Westminster Abbey*



*Pink O'hara*



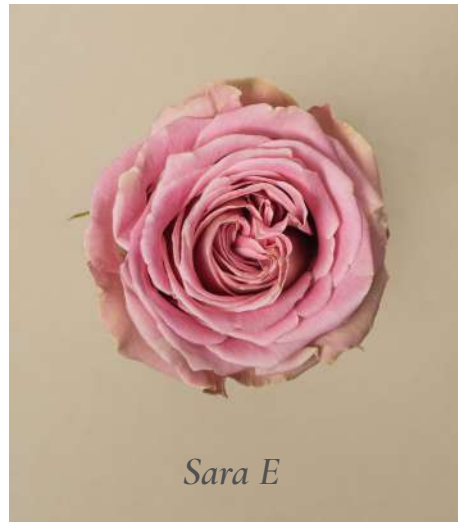
*Princess Crown*



*London Eye*



*Cafe Latte*



*Sara E*



*Queen's Crown*



*London Bell*



*Enchantment | bicolor*



*Sara E*

This variety is exclusive to Milagro with its lightness and luminosity yet nostalgic overall look, we proudly named it Sara E in honor of our grandmother Sara Elisa.



*Elba*



### 03. *Spray Roses*

Discover our exquisite collection of spray garden roses, showcasing vibrant clusters of blooms and rich foliage. Ideal for bouquets and centerpieces, these versatile roses effortlessly enhance any setting with elegance and texture.



*Somerset*



*Floreana*



*Bali*



*Ginger*



*Floreana*



*Elba*

Hot Pink



## 04. *Ranunculus*

Introducing Milagro's ranunculus an elegant flower adored by florists for its delicate, ruffled high petal count. Explore our sturdy stems, vibrant colors and delightful texture, ideal for crafting stunning Table Stylings and centerpieces.



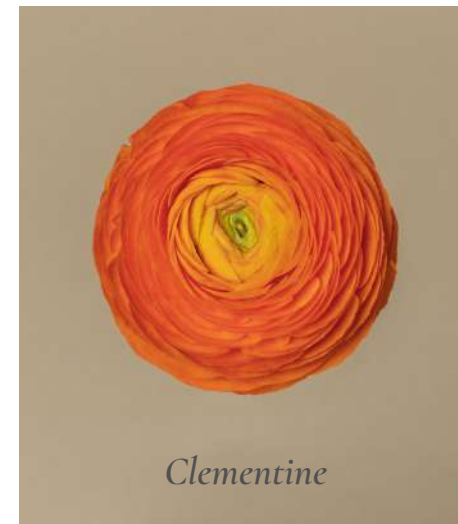
*Bianco*



*Commedia*



*Giallo*



*Clementine*



*Confetto*



*Venere*



*Lady*



*Hot pink*



*Rosso*



## 05. Anemones

Meet our anemones a captivating flower known for its bold colors and striking black textured center. With its unique charm and graceful petals, anemones sure enough make a statement.



*Panda*



*Blushing Panda*



*Fuego*



*Fuchsia*



*Fuego*



*Blu*

# *Milagro in Seasons*

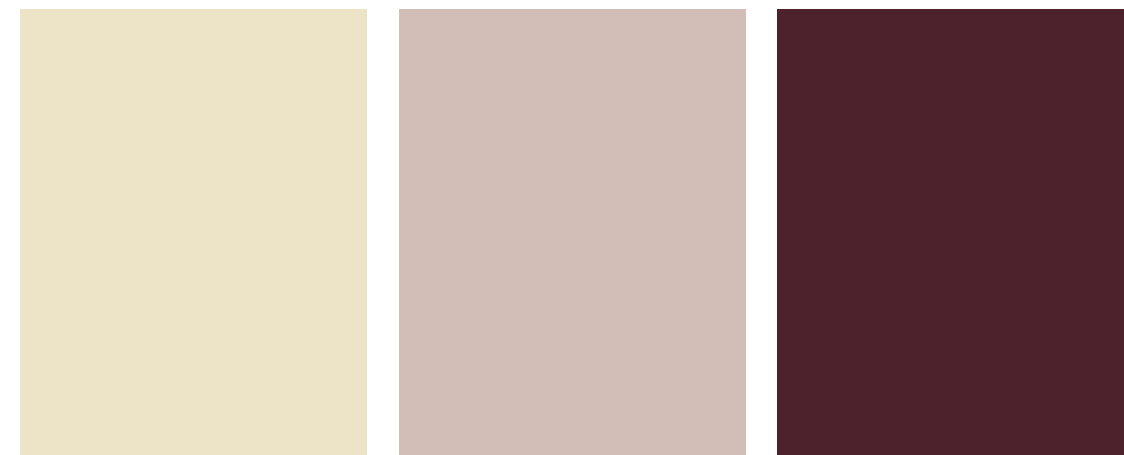
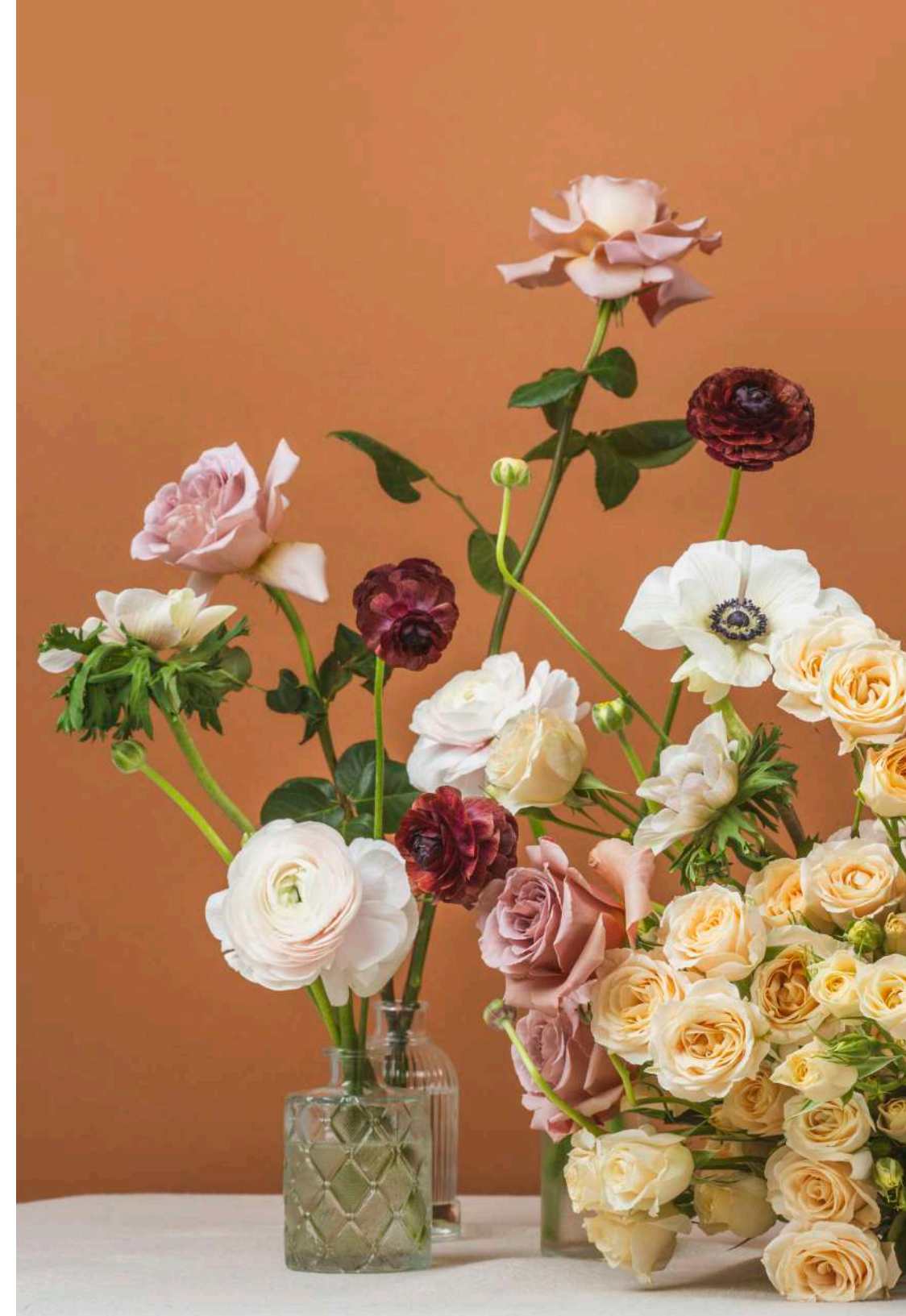
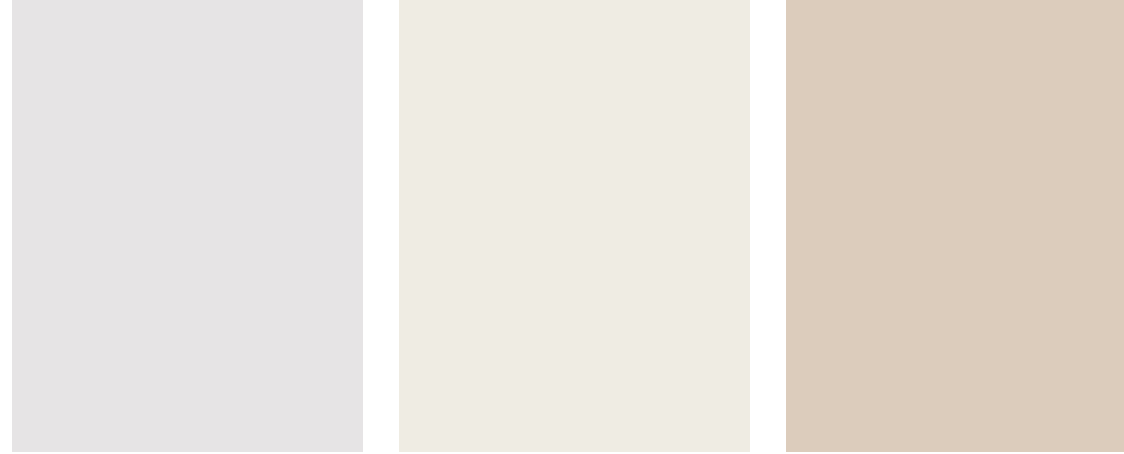
As floral trend enthusiasts, we proudly present 'Milagro in Seasons' a segment designed to inspire you with innovative ways to use our varieties. Discover creative installation ideas and seasonal floral compositions, along with fresh color palettes to elevate your designs!

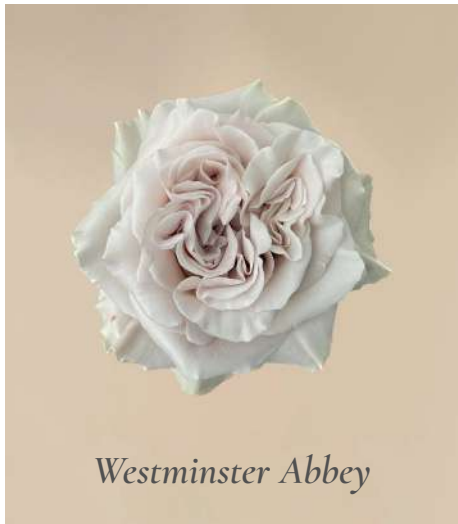
# 01. *Timeless Neutrals*

Natural neutral hues remain among the most versatile shades, offering sophistication, elegance, and refinement.

In this collection, we've incorporated long-term neutrals like Westminster Abbey, Quicksand, and White O'Hara, alongside rustic tones such as Café Latte and Barista to create a balanced and harmonious sensation.

This terra-inspired palette is reliable year-round, offering the opportunity to experiment with different varieties at any season.





*Westminster Abbey*



*Panda*



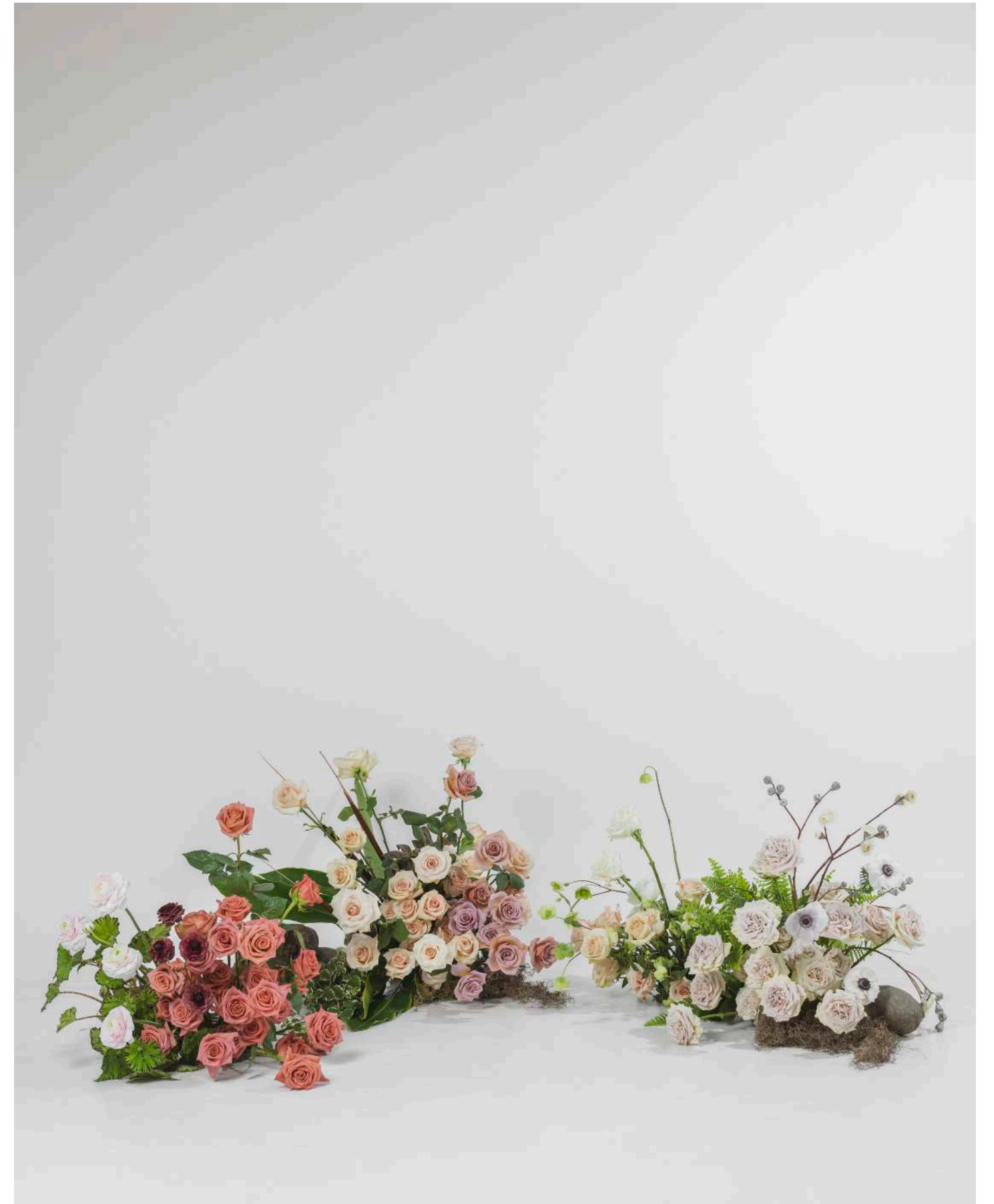
*Playa Blanca*



*White O'hara*



*Bali*





*Quicksand*



*Pink Mondial*



*Confetto*



*Cafe Latte*



*Barista*



*Café del Mar*

02.

## Magma Hues

This collection makes a bold and vibrant statement due to the fiery reds of Freedom and Black Panther, combined with the intense rust of Café del Mar.

This monochrome red palette is enhanced with a pop of coolness, highlighting our deep indigo anemones.

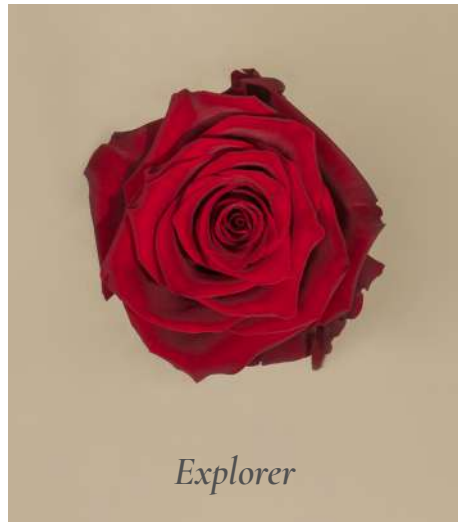
This raw and rustic palette is perfect for showcasing flower varieties that thrive in dramatic hues full of textures.



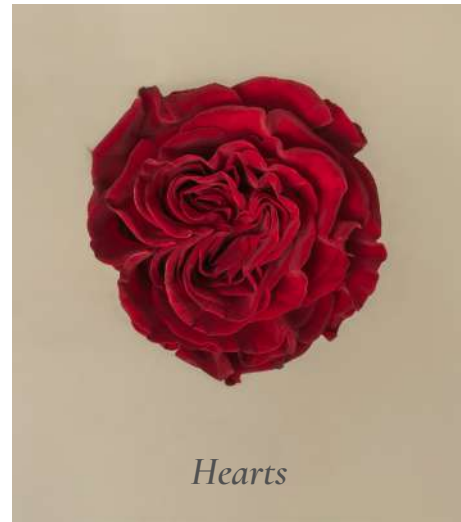




*Café del Mar*



*Explorer*



*Hearts*



*Freedom*



*Fuego*



*Nina*

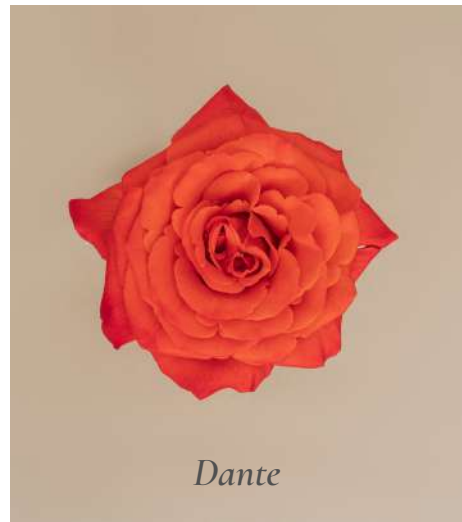


*Red Panther*



*Dark X-pression*





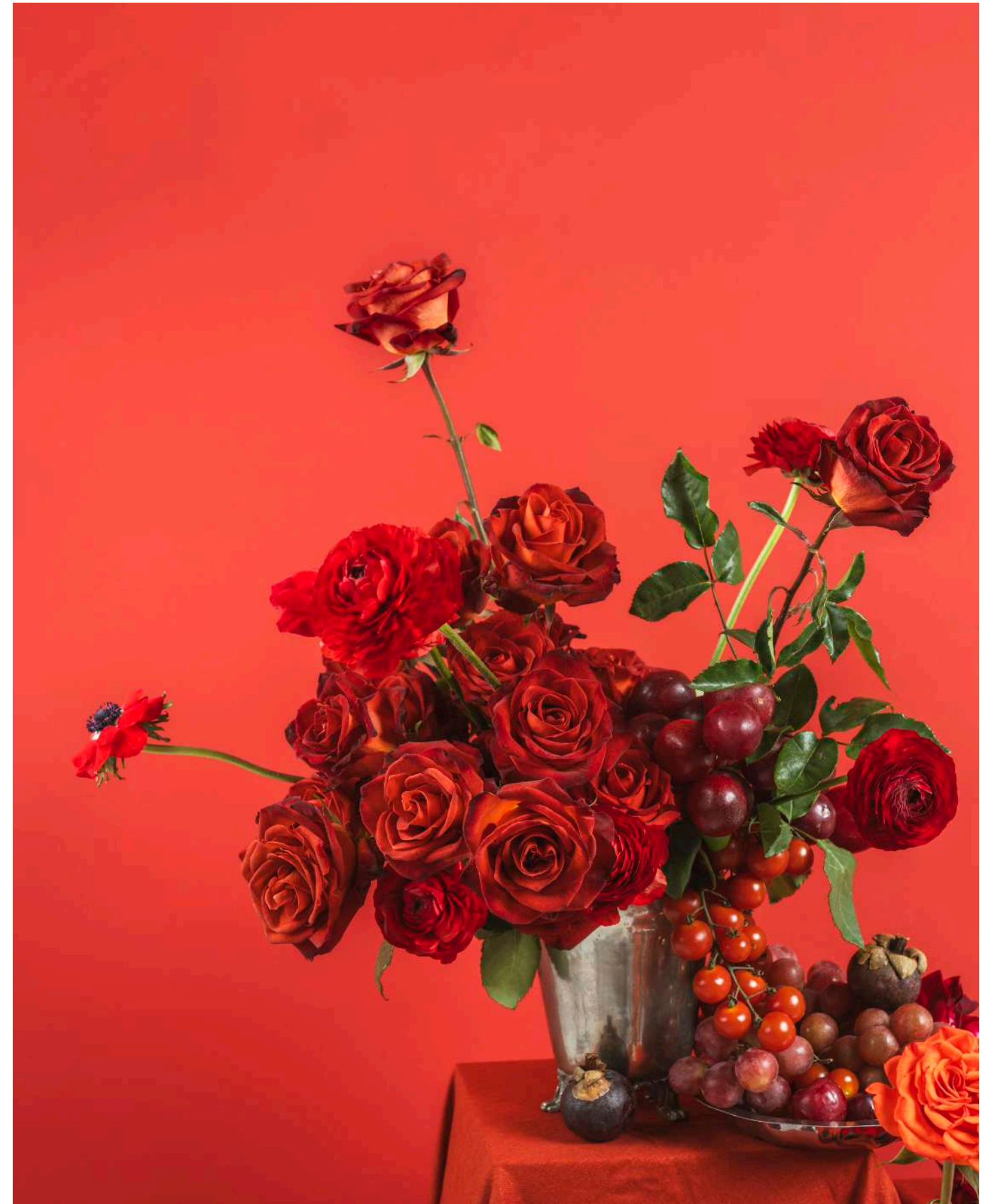
*Dante*



*Kahala*



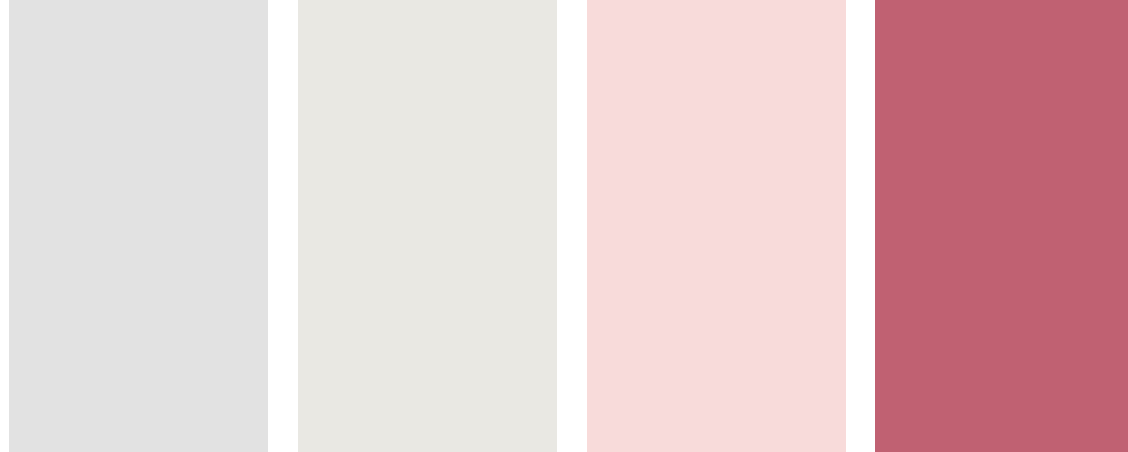
*Blu*



# 03. Berries & Cream

This exquisite collection embodies a sense of luxury and timeless elegance, blending warm and cold hues to create a stunning visual contrast.

The subtle hints of a creamy Celestial Yellow provided by our Commedia ranunculus and Candlelight rose variety create a beautiful contrast with the vibrant colors of Queen's Crown and Ascot, complemented by our Sara E trusted pink tones.





*Cadlelight*



*Proud*



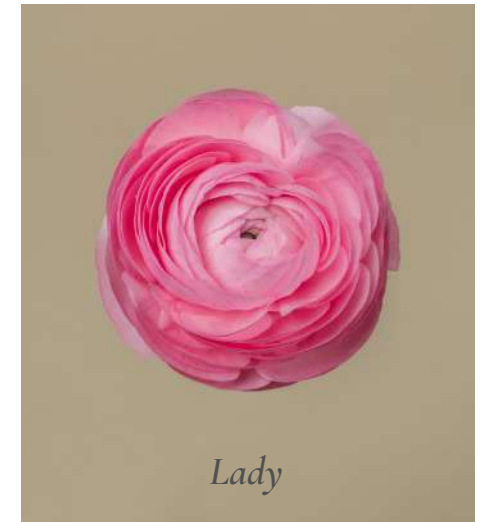
*Sparkle*



*Cafe Latte*



*Sara E*



*Lady*



*Buttercup*



*Commedia*



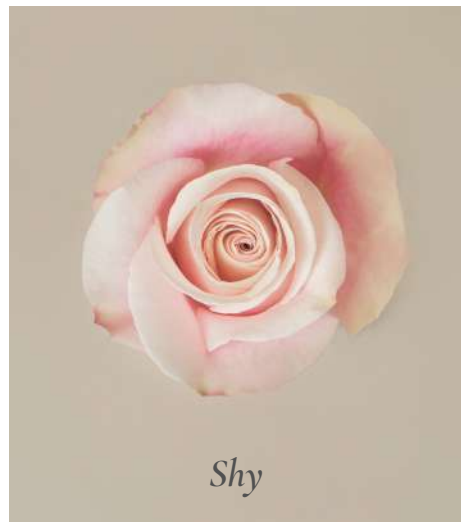
*Ginger*



*Pink O'hara*



*Elba*



*Shy*





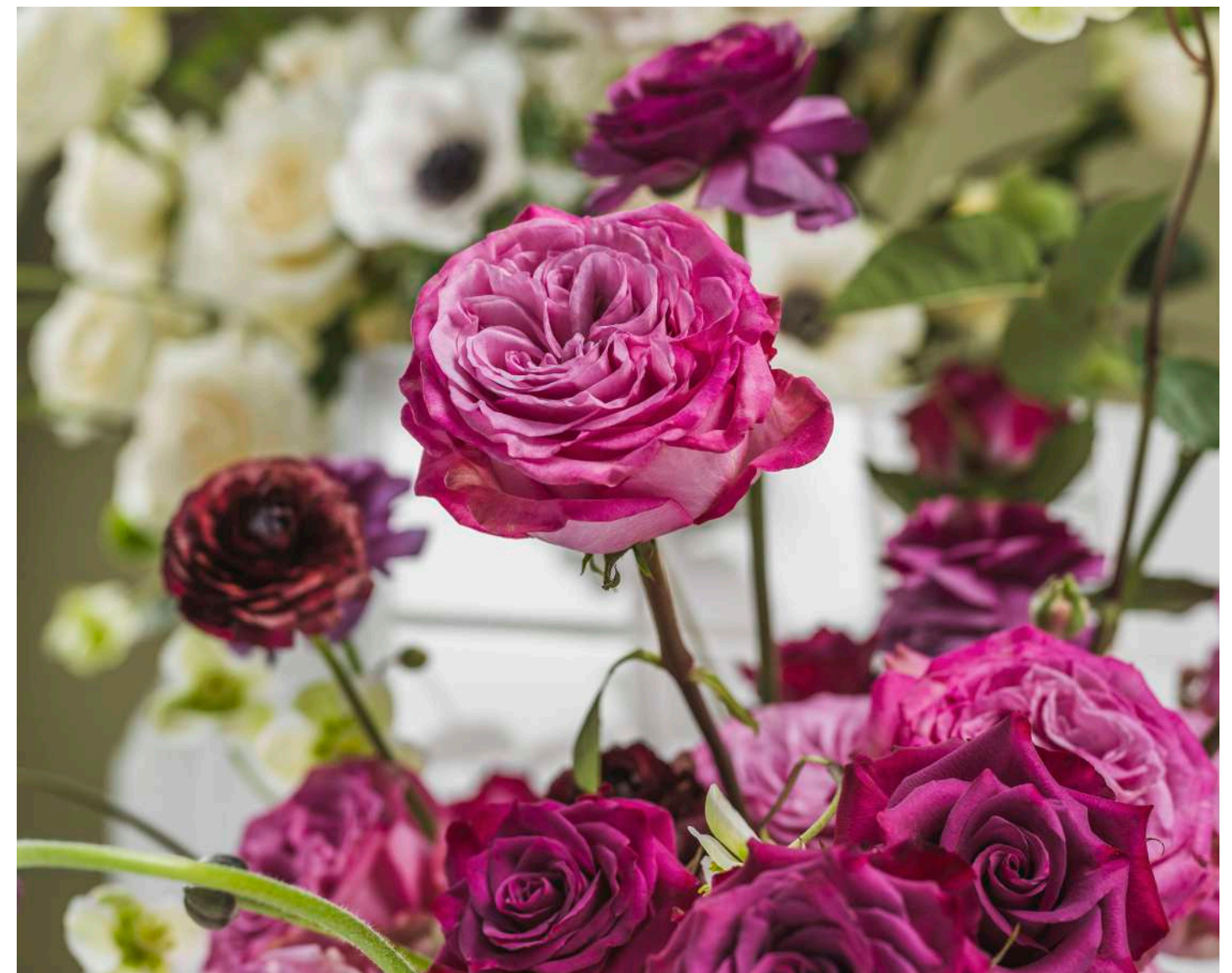
*Queen's Crown*



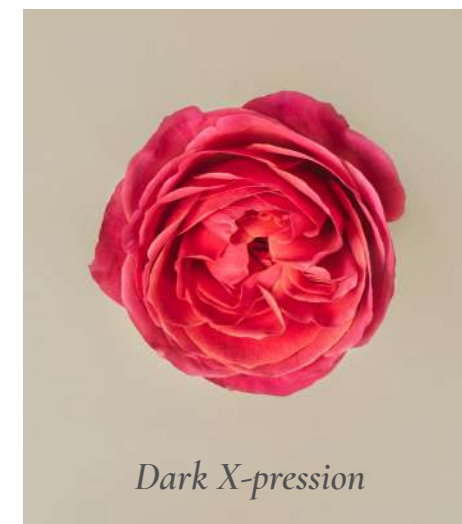
*Moody Blues*



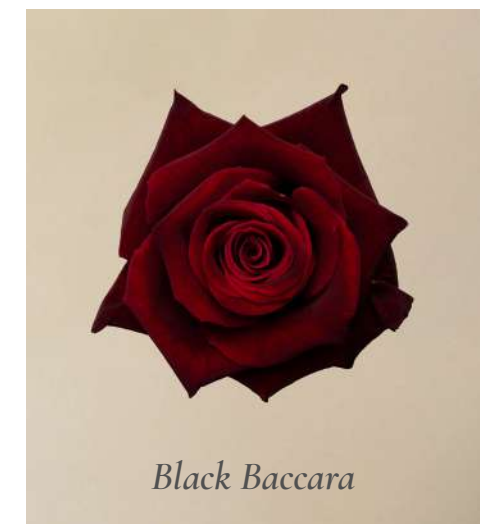
*Fuchsia*



*Ascot*



*Dark X-pression*

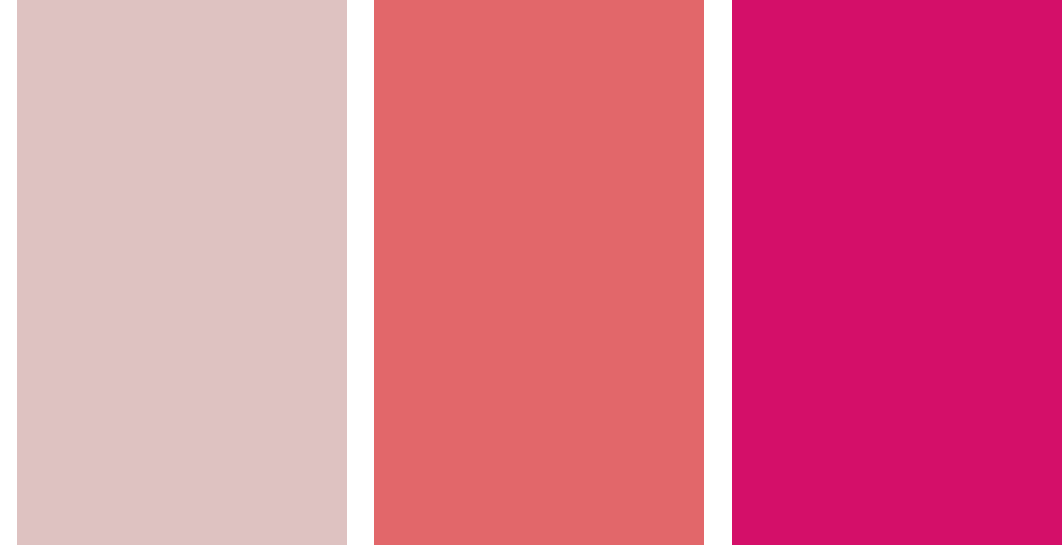


*Black Baccara*

# 04. *Sunset Glow*

This stunning collection capture the vibrant energy of warm hues, seamlessly transitioning from yellow to the truest hot pinks, using strategically the most astonishing peach varieties.

Showcasing a full spectrum of coral tones, from the distinctive yellows of King's Cross, Honeydrop, and Symbol, to the hot pinks hues of Full Monty, Pink Floyd, and our exquisite London Bell.





*King's Cross*



*Momentum*



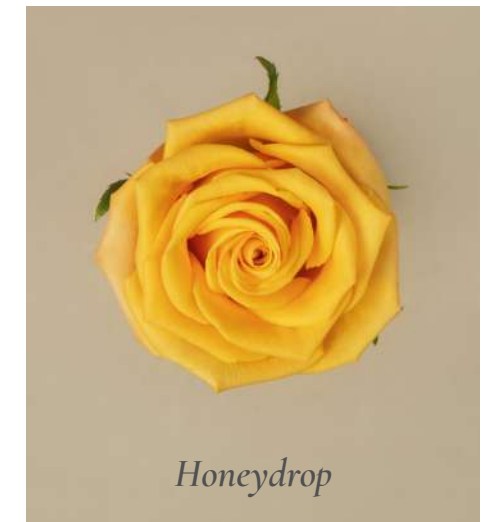
*Giselle*



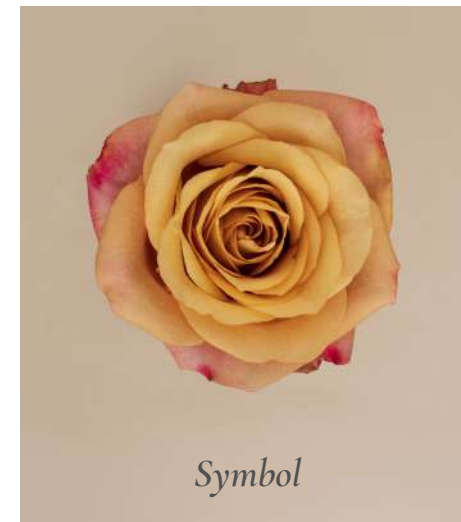
*Somerset*



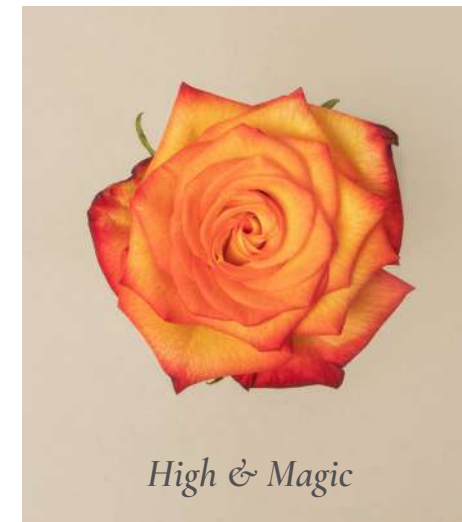
*Giallo*



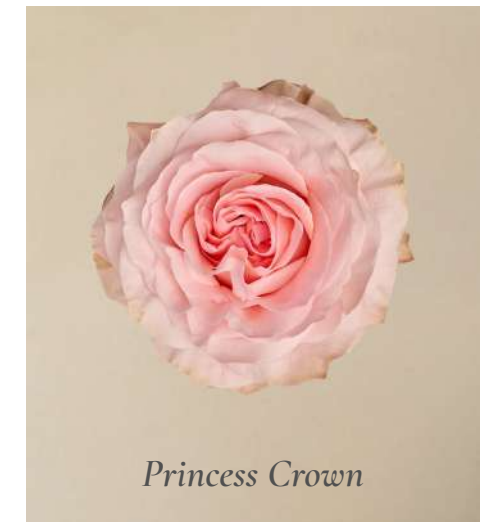
*Honeydrop*



*Symbol*



*High & Magic*



*Princess Crown*



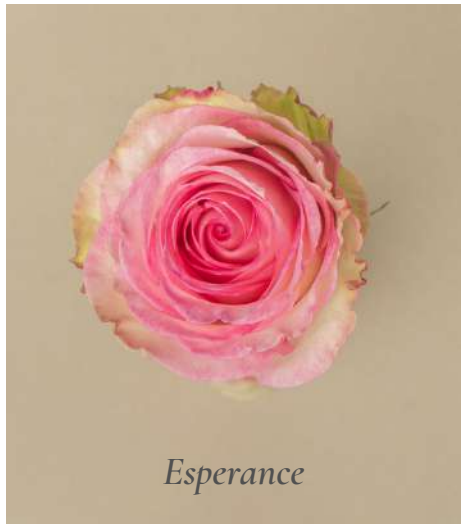
*Phoenix*



*Venere*



*Saga*



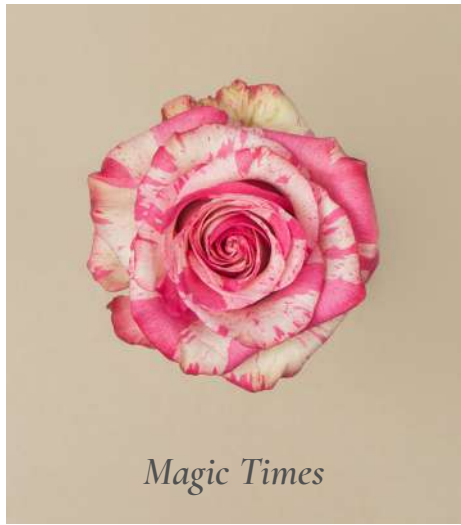
*Esperance*



*London Eye*



*Hermosa*



*Magic Times*



*London Bell*



*Pink Floyd*



*Lola*



*Full Monty*



*Enchantment*



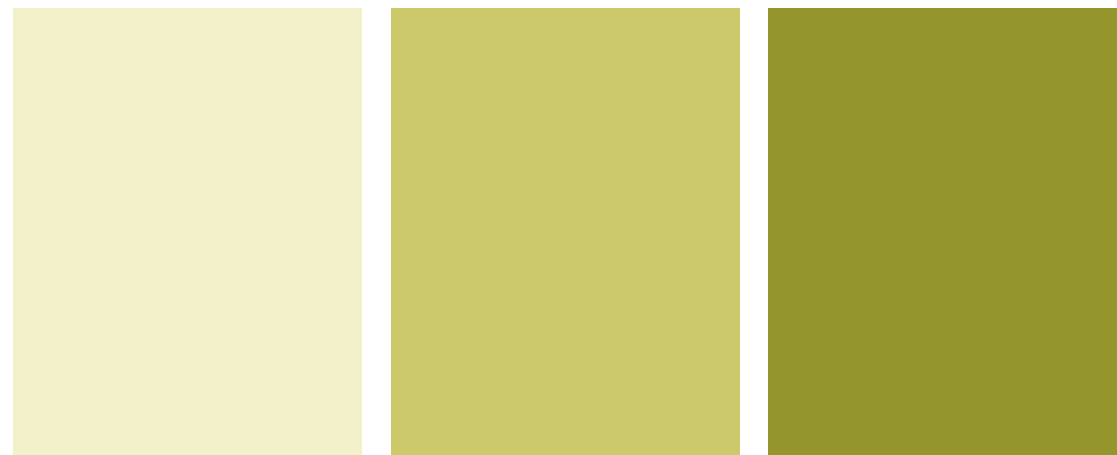
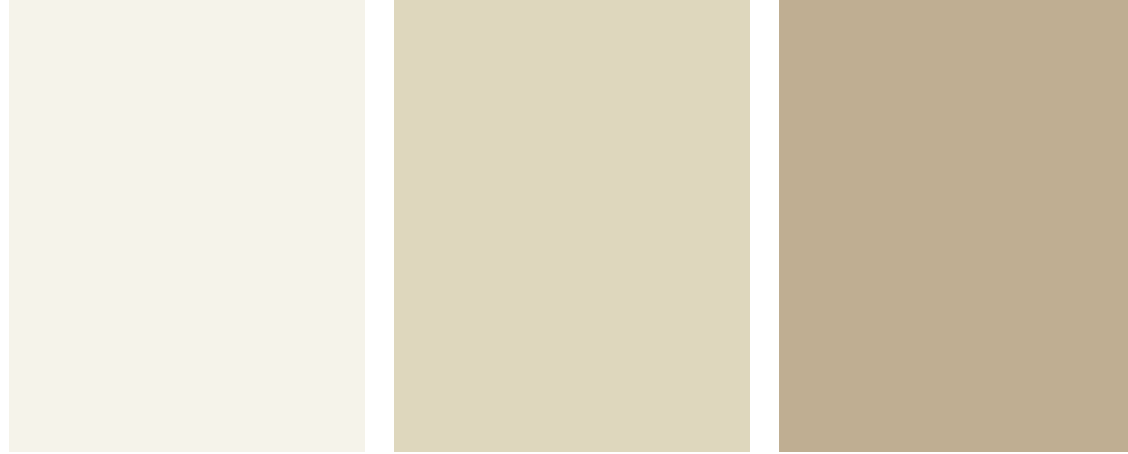


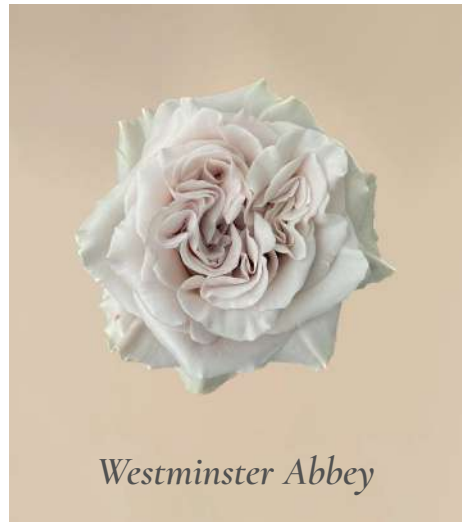
# 05. *Pistachio Cream*

This collection is a calm and refreshing balance of greens and creams.

The silky elegance of Westminster Abbey, Candlelight, and white anemones in this collection are the key of creating serene environments.

This selection is enhanced by the presence of limes tones and subtle pinks.

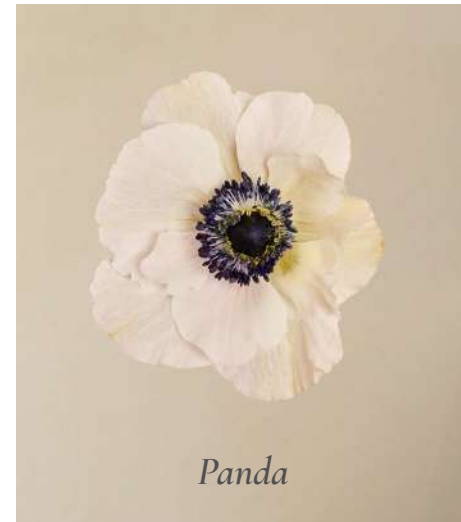




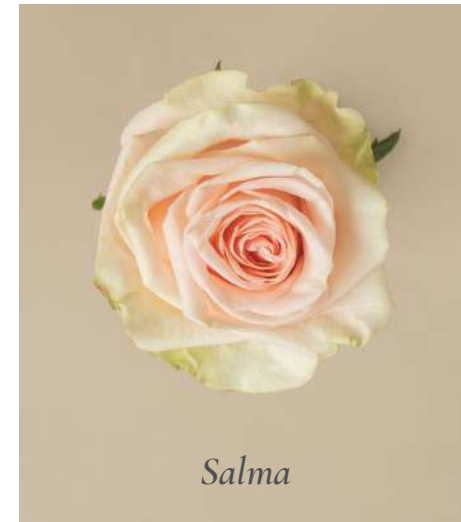
*Westminster Abbey*



*Bianco*



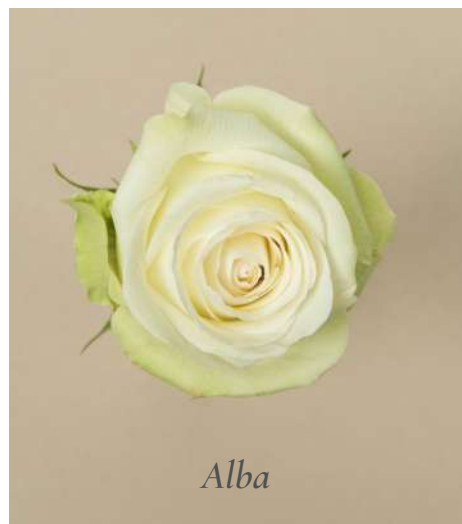
*Panda*



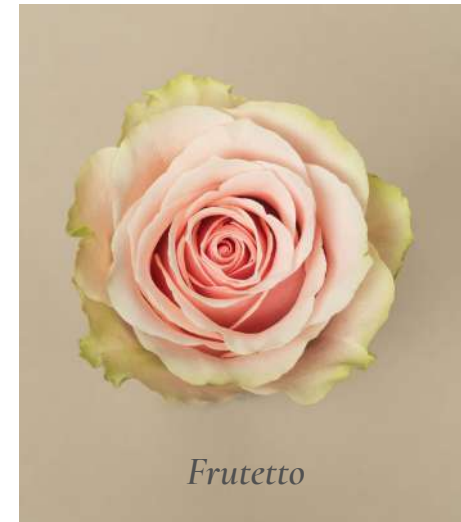
*Salma*



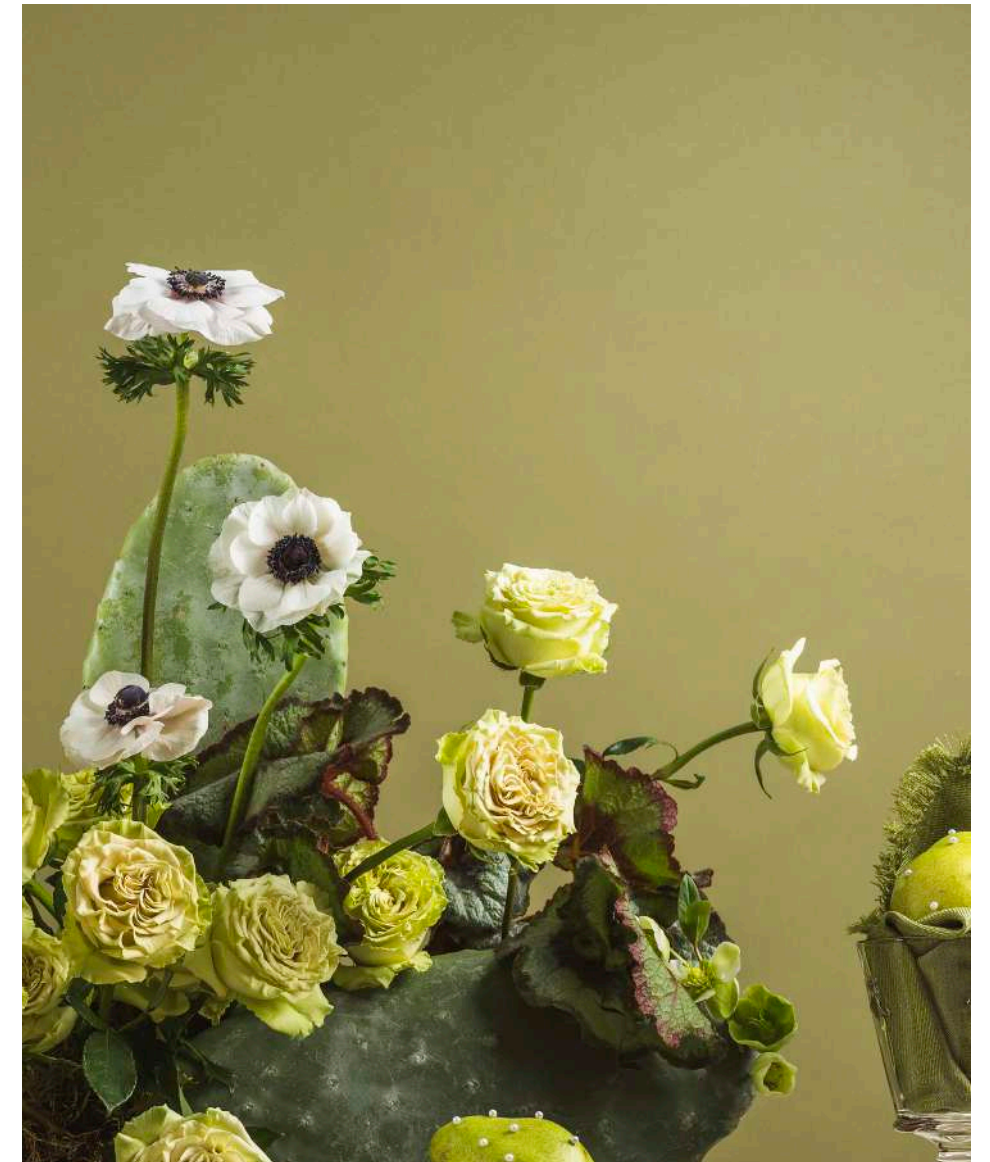
*Mondial*



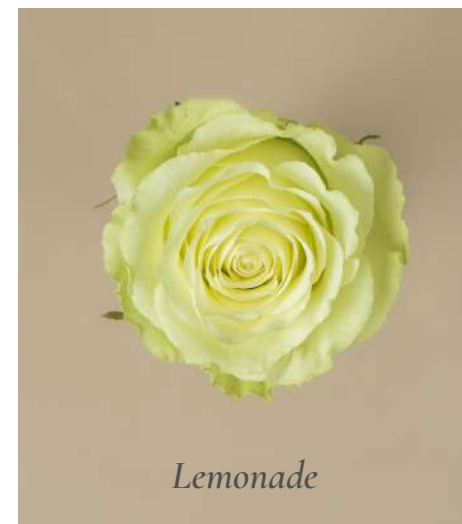
*Alba*



*Frutetto*



*Matcha*



*Lemonade*



*Floreana*



MILAGRO

## CONTACT US AT

[www.milagro.co](http://www.milagro.co) | [@milagroflowers](https://www.instagram.com/milagroflowers) | [sales@elmilagro.co](mailto:sales@elmilagro.co) | (+57) 315 364 2409